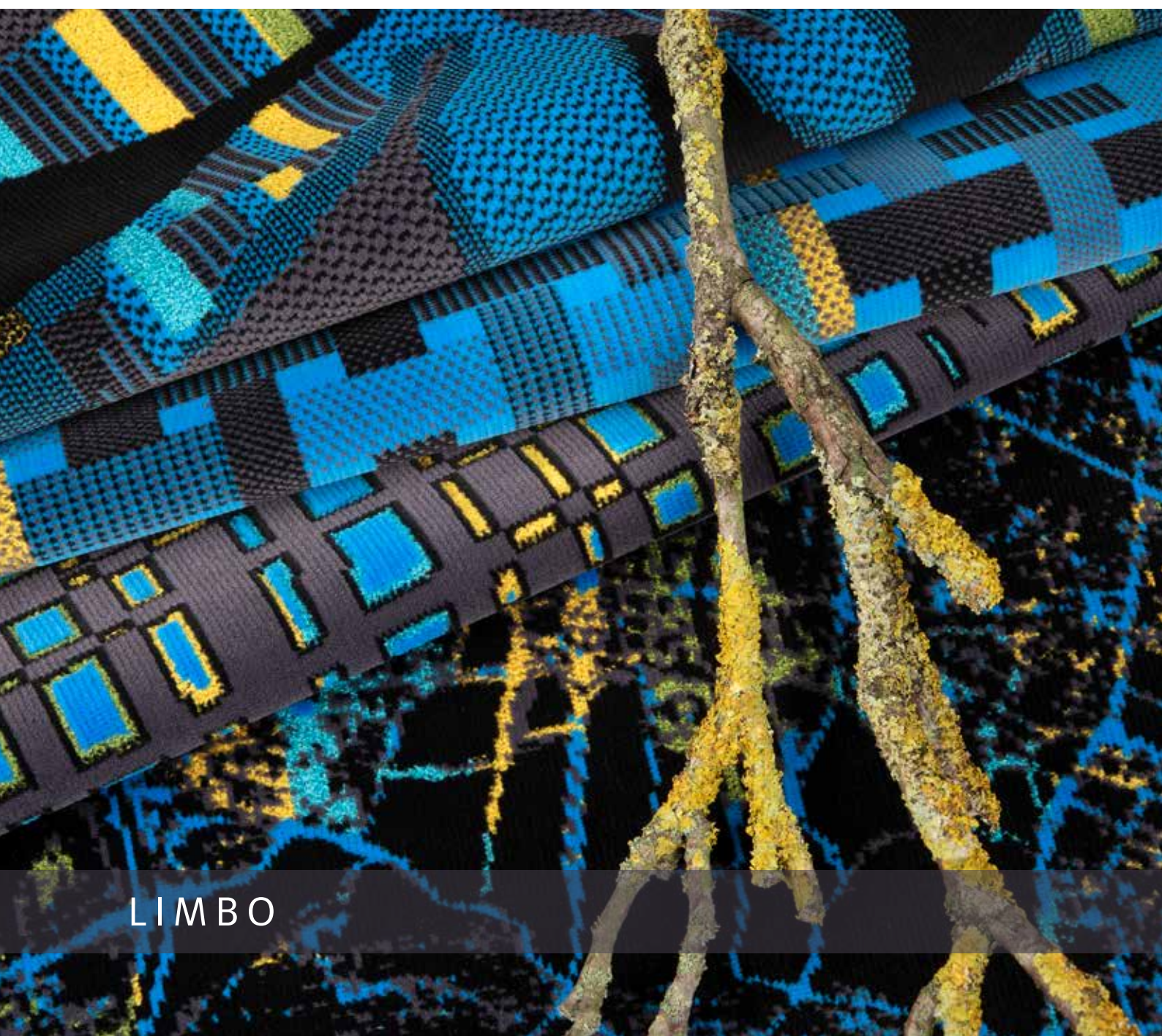
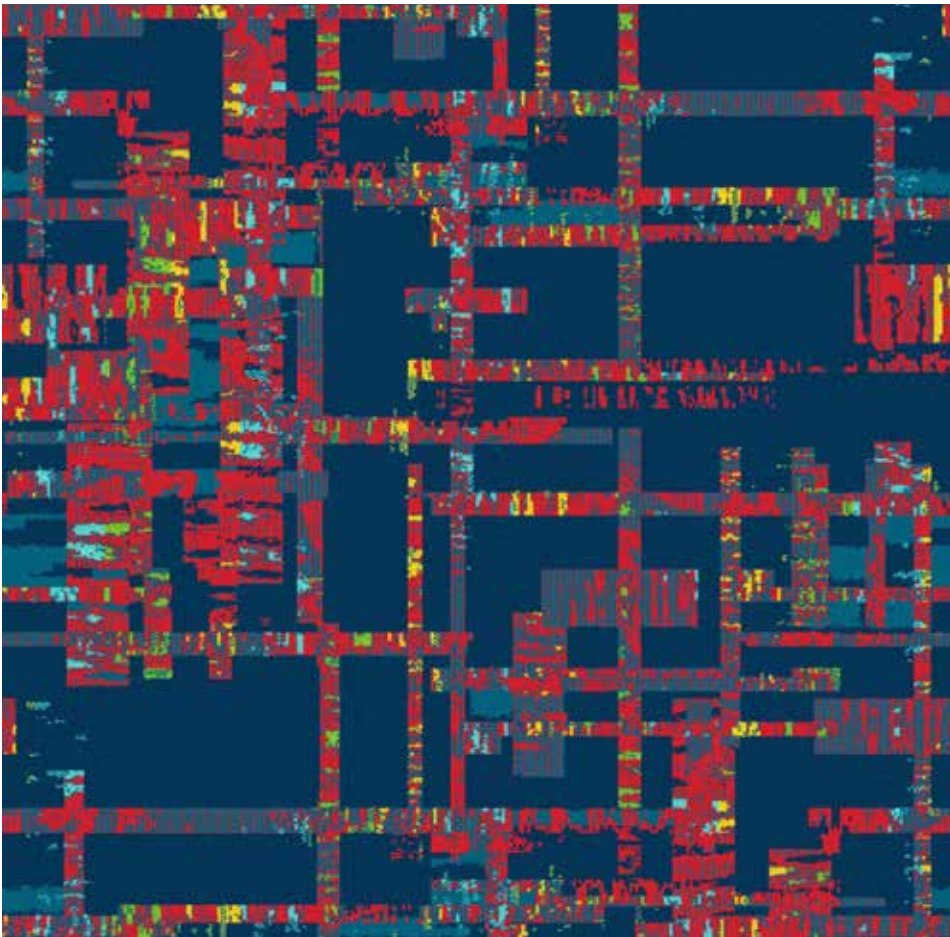


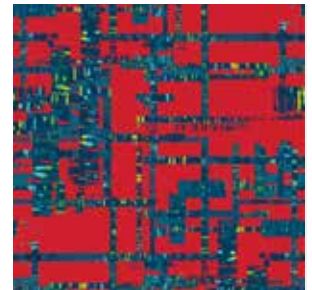
Schoepf
Shaping the Future of Fabrics



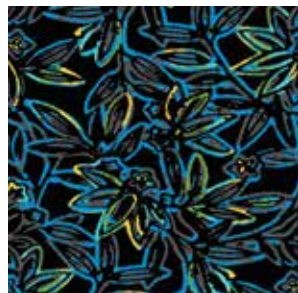
LIMBO



3423345 - 876



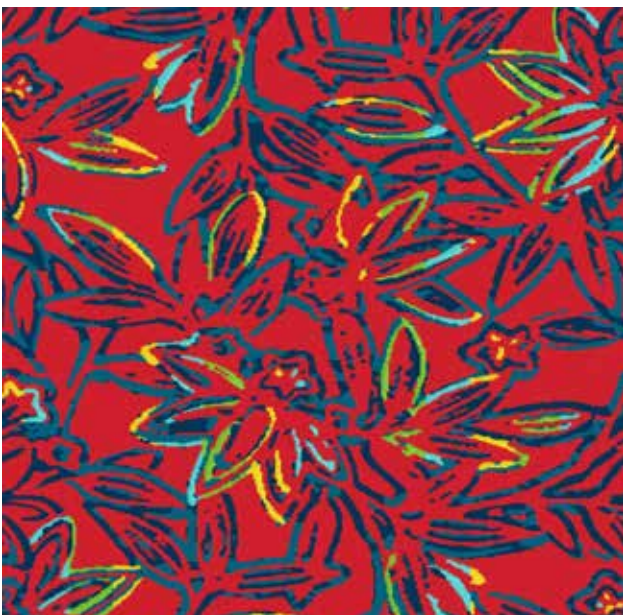
3423355 - 876



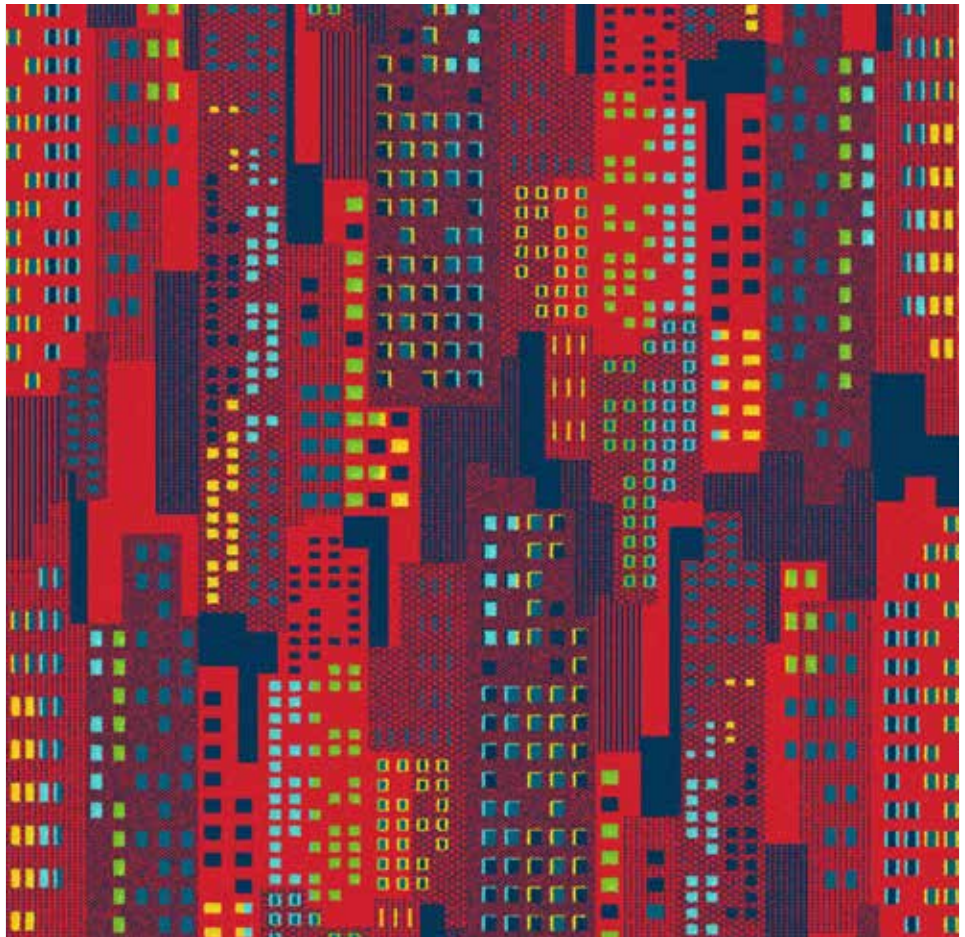
3423365 - 836



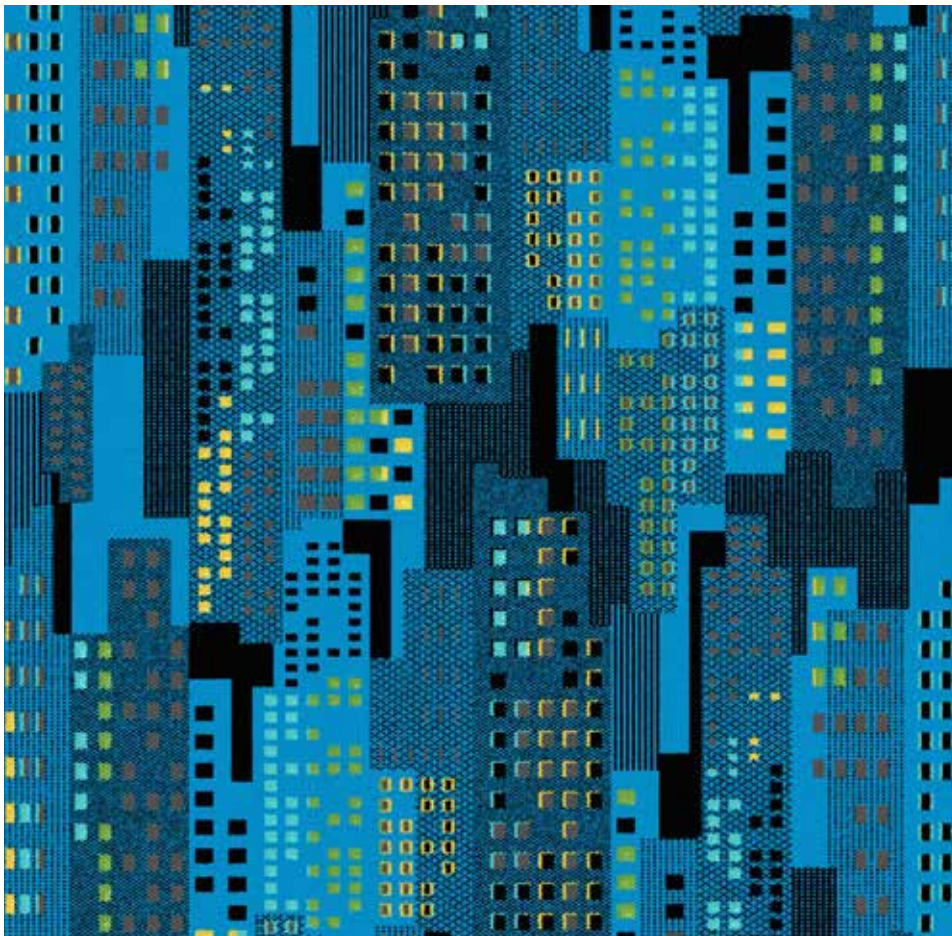
3423365 - 876



3423375 - 876



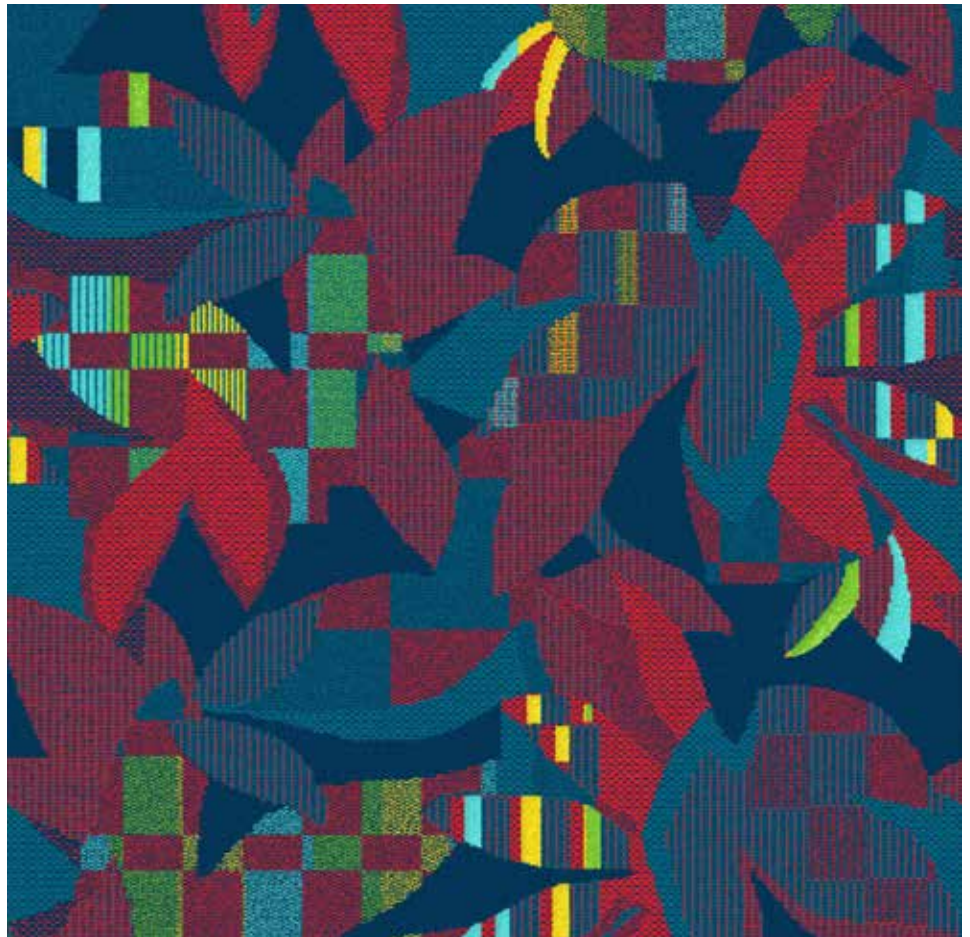
3423505 - 876



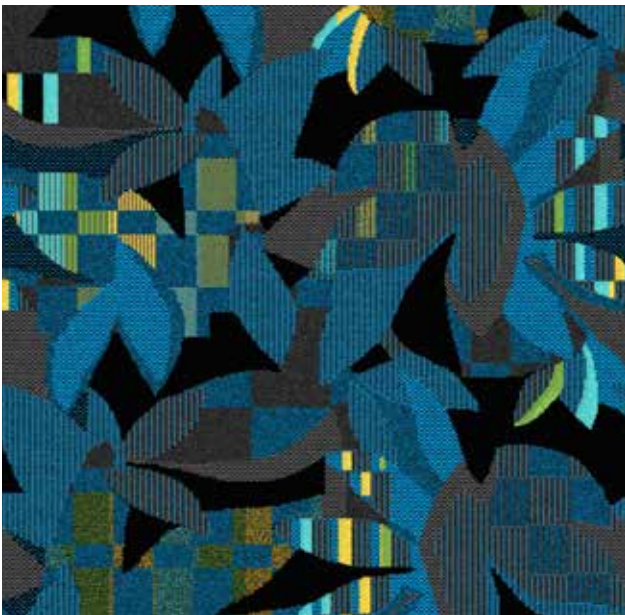
3423505 - 836



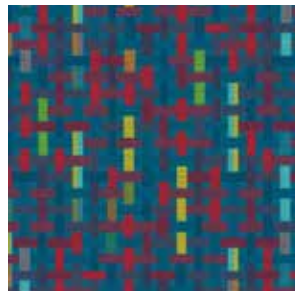
3423495 - 836



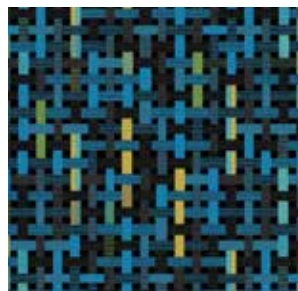
3423485 - 876



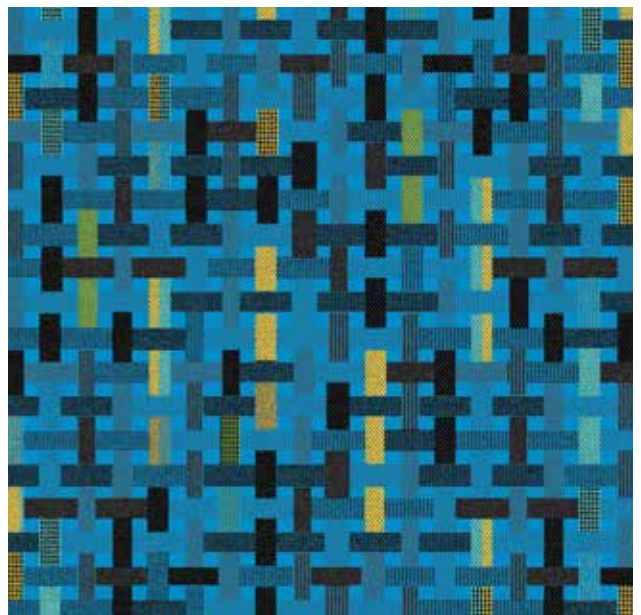
3423485 - 836



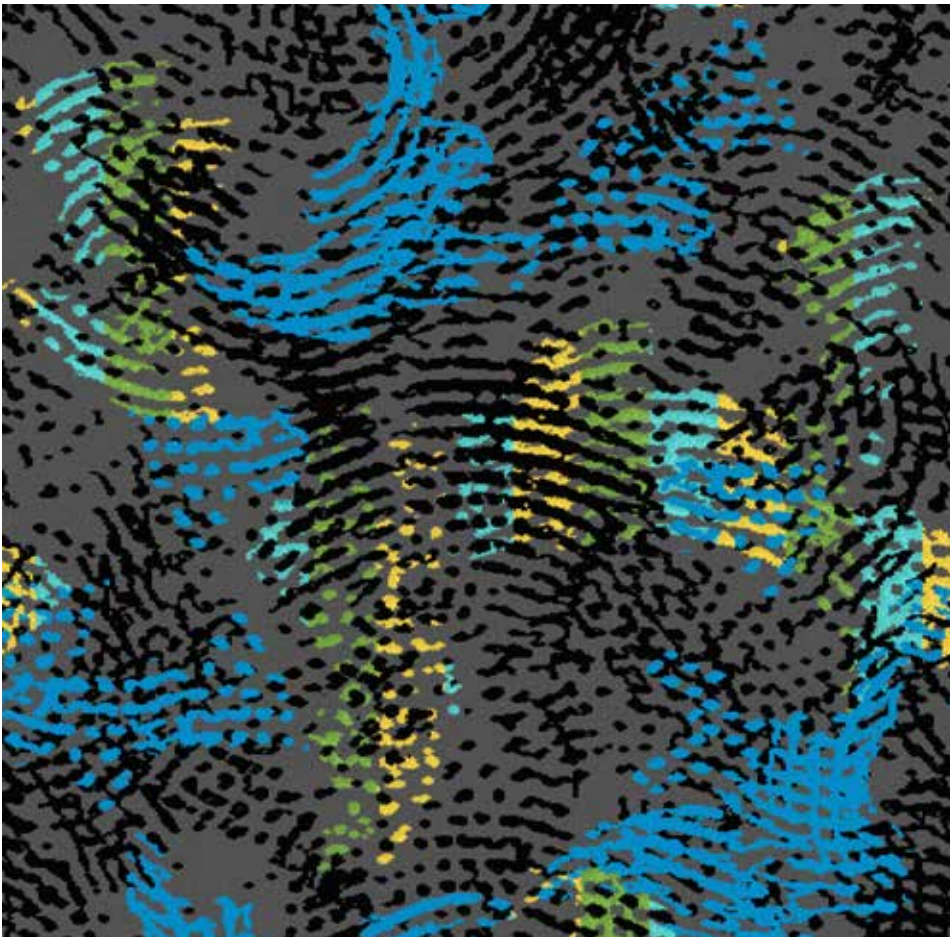
3423475 - 876



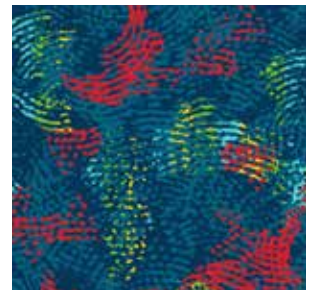
3423455 - 836



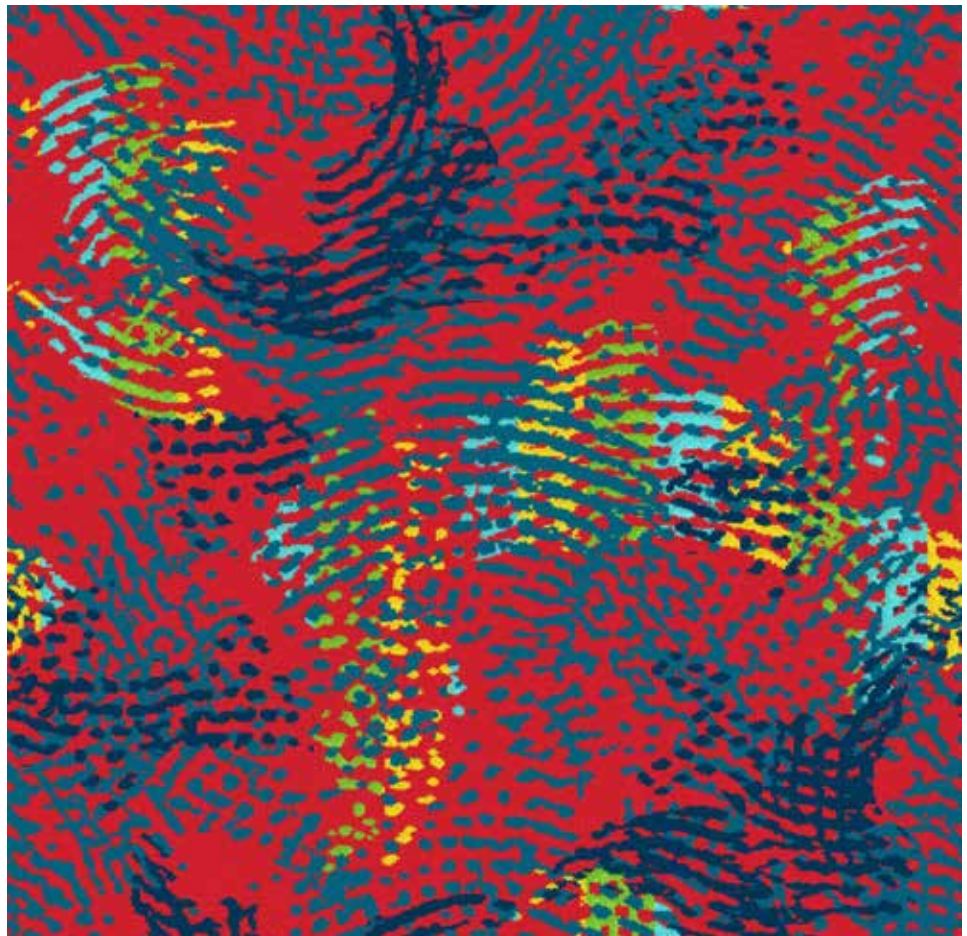
3423465 - 836



3423445 - 836



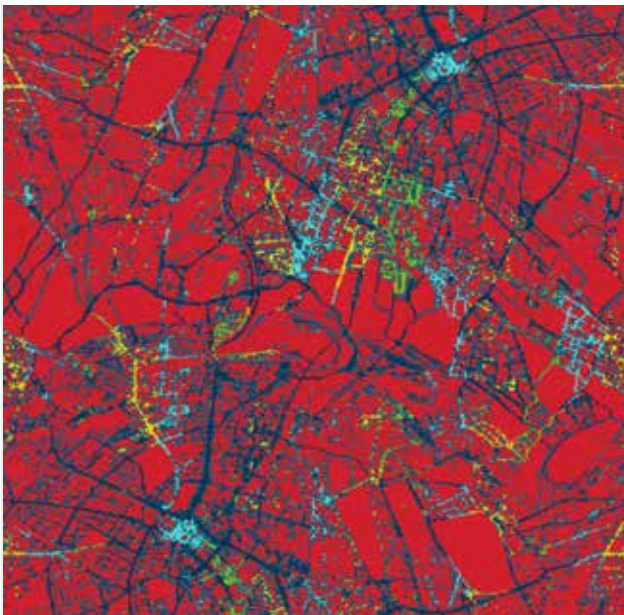
3423425 - 876



3423435 - 876



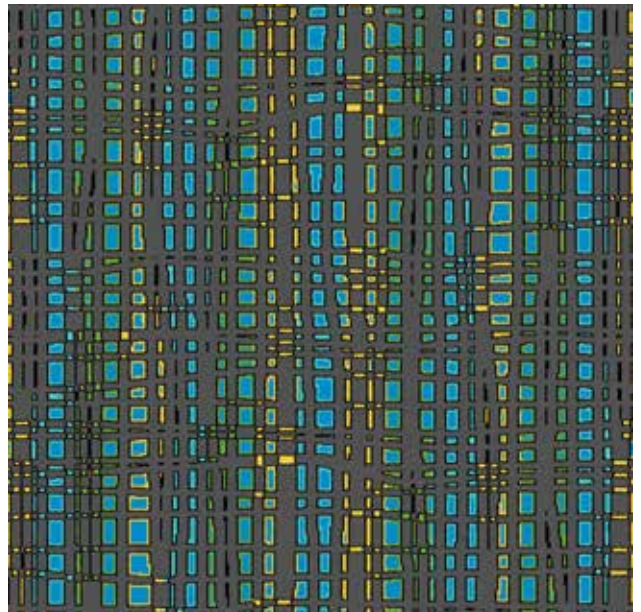
3423405 - 836



3423415 - 876



3423385 - 836



3423395 - 836

**Technische Daten: Limbo B**

Material/Nutzschicht: Polyester
Breite: 156 cm
Scheuertouren
(DIN EN ISO 12947-2):
mind. 70.000 Touren
Heißlichtechtheit
(DIN EN ISO 105-B06):
Note 6-7 (theor. Höchstwert = 8).

**Brandprüfung gemäß der neuen
ECE Regelung Nr. 118:03.**

Haben Sie Fragen zur neuen ECE Regelung
Nr. 118:03? Wir helfen gerne weiter.

Auf Wunsch auch mit unserer **Anti-Schmutz-
Ausrüstung (ASA)** lieferbar.

Optional mit der permanenten bakterien-
und virusabweisenden Beschichtung
„Schoepf Protect Pro“ erhältlich.

Mögliche Farbabweichungen in den Abbildungen
sind drucktechnisch bedingt. Bitte fordern Sie
bei Bedarf Original-Stoffmuster an.

Technical information: Limbo B

Material/Pile: Polyester
Width: 156 cm
Abrasion resistance
(DIN EN ISO 12947-2):
min. 70.000 rubs
Light-fastness
(DIN EN ISO 105-B06):
value 6-7 (theor. highest value = 8).

**Flammability test according to the
new ECE regulation No. 118:03.**

Do you have any questions about the new ECE
regulation No. 118:03? If you have any further
questions please do not hesitate to contact us.

Upon request with special **Anti-Soil treatment
(ASA)**.

Optional with „**Schoepf Protect Pro**“
permanent bacteria- and virus- repellent
coating available.

Due to the printing process colours might differ
slightly. On request we gladly will supply fabric
samples.

Données techniques: Limbo B

Matériau/poil: polyester
Largeur: 156 cm
Résistance à l'abrasion
(DIN EN ISO 12947-2):
au moins 70.000 tours
Résistance à l'exposition intensive
à la lumière (DIN EN ISO 105-B06):
noté 6-7 (valeur maximale théorique = 8).

**L'épreuve du feu selon le
nouveau règlement ECE n° 118:03.**

Avez-vous des questions concernant
le nouveau règlement ECE n° 118:03?
Nous serons heureux de vous aider.

Sur demande, nos tissus vous sont livrés
avec protection **antitaches ASA**.

Disponible en option avec revêtement
antibactérien permanent et anti-virus
'Schoepf Protect Pro'.

Pour des raisons d'impression, les couleurs dans
les illustrations peuvent diverger légèrement du
ton original. Demandez nous un échantillon de
tissu original en cas de besoin.

E. Schoepf GmbH
Rathausstraße 18 · DE-95236 Stambach
Tel.: +49 (0) 92 56 80 0 · Fax: +49 (0) 92 56 80 72
info@e-schoepf.de · www.e-schoepf.de